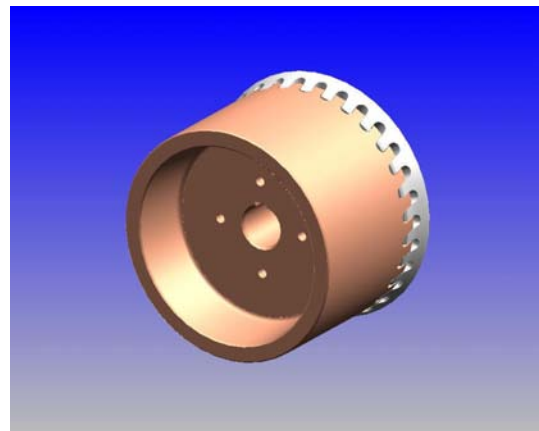




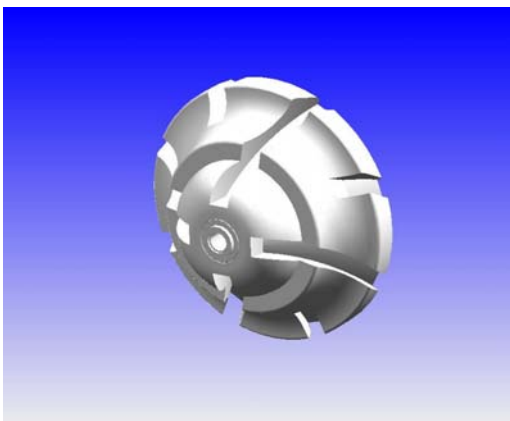
D.K. Holdings and its customers benefit from Solid Edge

D.K. Holdings manufactures Diamond Tools for the Stone, GRP, Engineering, Glass and Cigarette industries. The company prides itself in producing a wide range of quality tools, whether they are standard or special, for its diverse customer base.

The Design department was already using a 2D package when a decision was made to look at a new system. At the time, a trial version of Solid Edge was available and so this was tested for a week. It became obvious that there were some real benefits in using a 3D system. Solid Edge was chosen over others in the market place not only because of its ease of use, but also because Cutting Edge Solutions were the obvious choice to provide the support needed.



The introduction of Solid Edge has meant that technical drawings are produced even quicker than before. Solid Edge drawings already produced can be easily and quickly copied then modified to produce new drawings. 3D models help visualize what is required and can be interrogated for information not previously available on the 2D system, this information then being used during the manufacturing process.



D.K. Holdings embraced Solid Edge and has benefited from it, and so has its customers. This has been achieved through D.K. Holdings being willing to change, Solid Edge being a good product, and Cutting Edge Solutions providing the support, particularly in the early stages, to help make it work.

Phil Wares, Industrial Engineer