



ALAN HONE ASSOCIATES

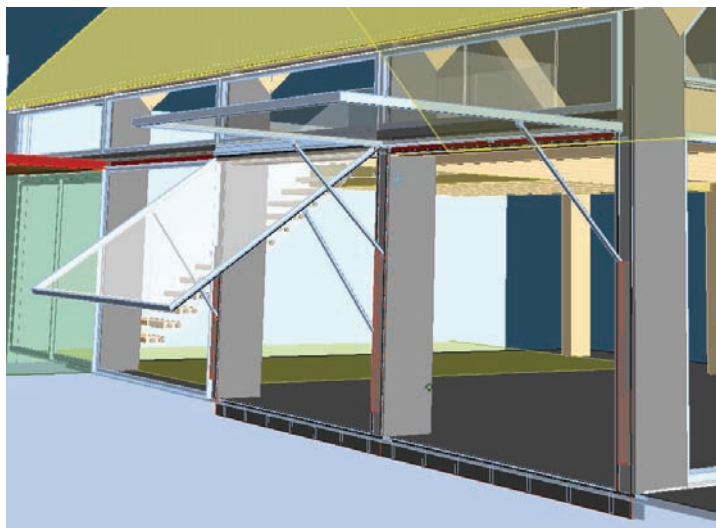
P O Box 1116  
Southam  
Warwickshire  
CV47 4AW  
Tel: +44 1327 220440  
Fax: +44 1327 264124

e-mail: [mail@alanhone.com](mailto:mail@alanhone.com)

## Engineering in the 3<sup>rd</sup> dimension

**Alan Hone Associates engineer unique solutions to architectural schemes involving glazing and metalwork**

Few of today's interesting building designs have flat walls. Some even move! They are conceived in 3 dimensions and need to be engineered and built the same way. Their many components have to be created by different specialists in various locations and then assembled far away, in the open air, and work first time. Solid Edge part and assembly modelling enable us to achieve that, especially when the jobs keep evolving.



**Cutting Edge Solutions Ltd** give us the support and encouragement to push the limits to deliver the (almost) impossible.

**Solid Edge helps us deliver when others don't know where to start.**