

Customer Profile

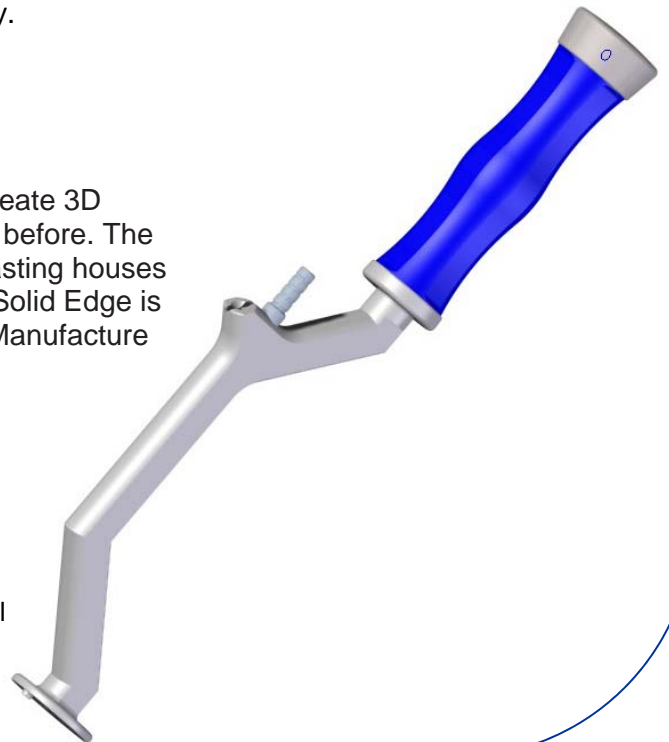
Corin utilise Solid Edge for its user friendly interface allowing time from concept to manufacture to be reduced.



Founded in 1985, Corin is based in Cirencester in the heart of the Cotswolds in South West England. The company's early philosophy was clear: a British company, providing high quality orthopaedic implants at a competitive price, with outstanding service to its Customers. The company is particularly focused on providing innovative solutions for restoring quality of life for younger, active patients. Products include hip resurfacing, total hip replacement, unicondylar knee replacement, mobile bearing total knee replacement, ankle replacement, shoulder replacement, ligament reconstruction and augmentation, spinal reconstruction, trauma products, and theatre disposables. Latest generation surgical instruments, together with minimally invasive systems and surgical navigation support this wide range of orthopaedic implants.

Today, Corin Group PLC is a world leader in the production of a wide range of orthopaedic devices for the treatment of the younger active patient, with direct operations in key markets around the world, and is highly regarded in financial circles as a classic example of the true British success story.

Solid Edge was introduced to enable the engineers to create 3D models compared to 2D drawings that were being used before. The 3D models enabled Corin to send accurate models to casting houses and the potential for FEA analysis. The advantage with Solid Edge is that it is also capable of producing the 2D drawings for Manufacture at the high quality that is required.



"We have been using Cutting Edge Solutions Ltd for many years now and have been impressed with the level of technical support and the quality of the training they provide."
Michael Deane, Technical Systems Engineer.